

1892



1929



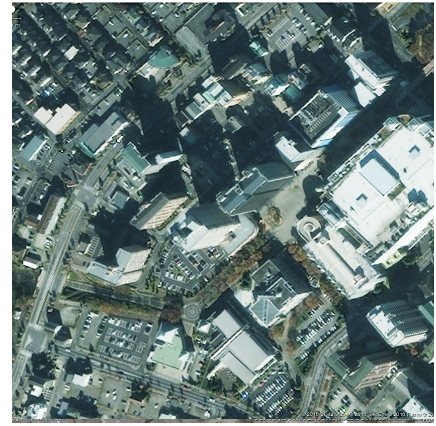
1954



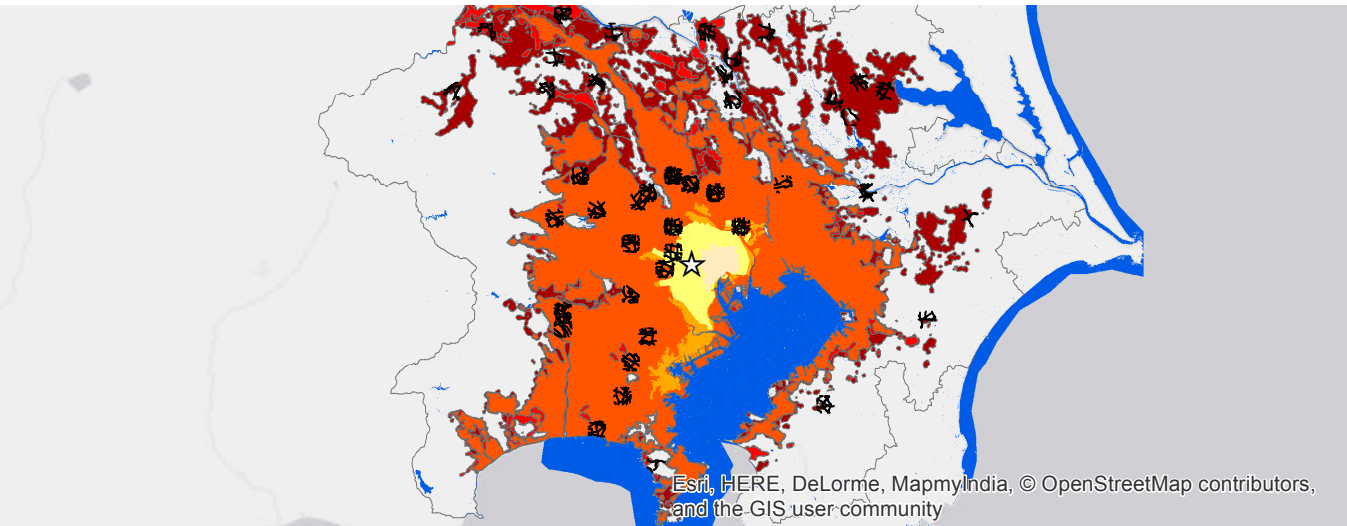
1990



2000



2014



Esri, HERE, DeLorme, MapmyIndia, © OpenStreetMap contributors, and the GIS user community

Tokyo, Japan
1892-2014

0 15 30 60 km



- 1892
- 1929
- 1954

- 1990
- 2000
- 2014

Arterial Roads

- ★ CBD
- Study area
- Water
- No data